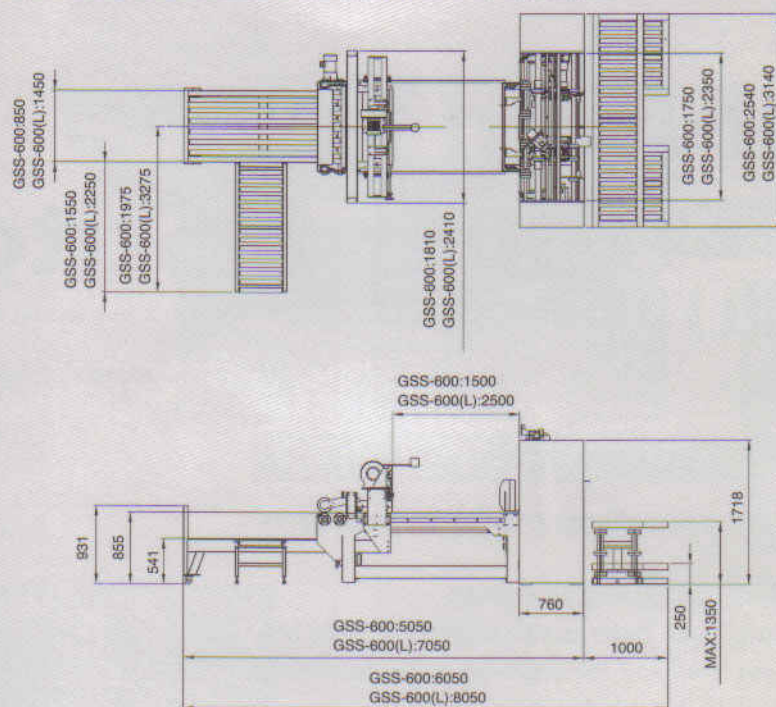
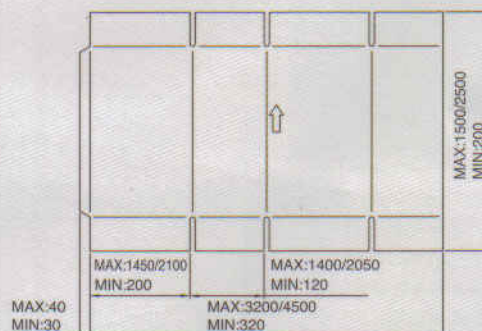


## GSS-600(L) 外型圖



## Size & Stitching Type 尺寸及釘和樣式

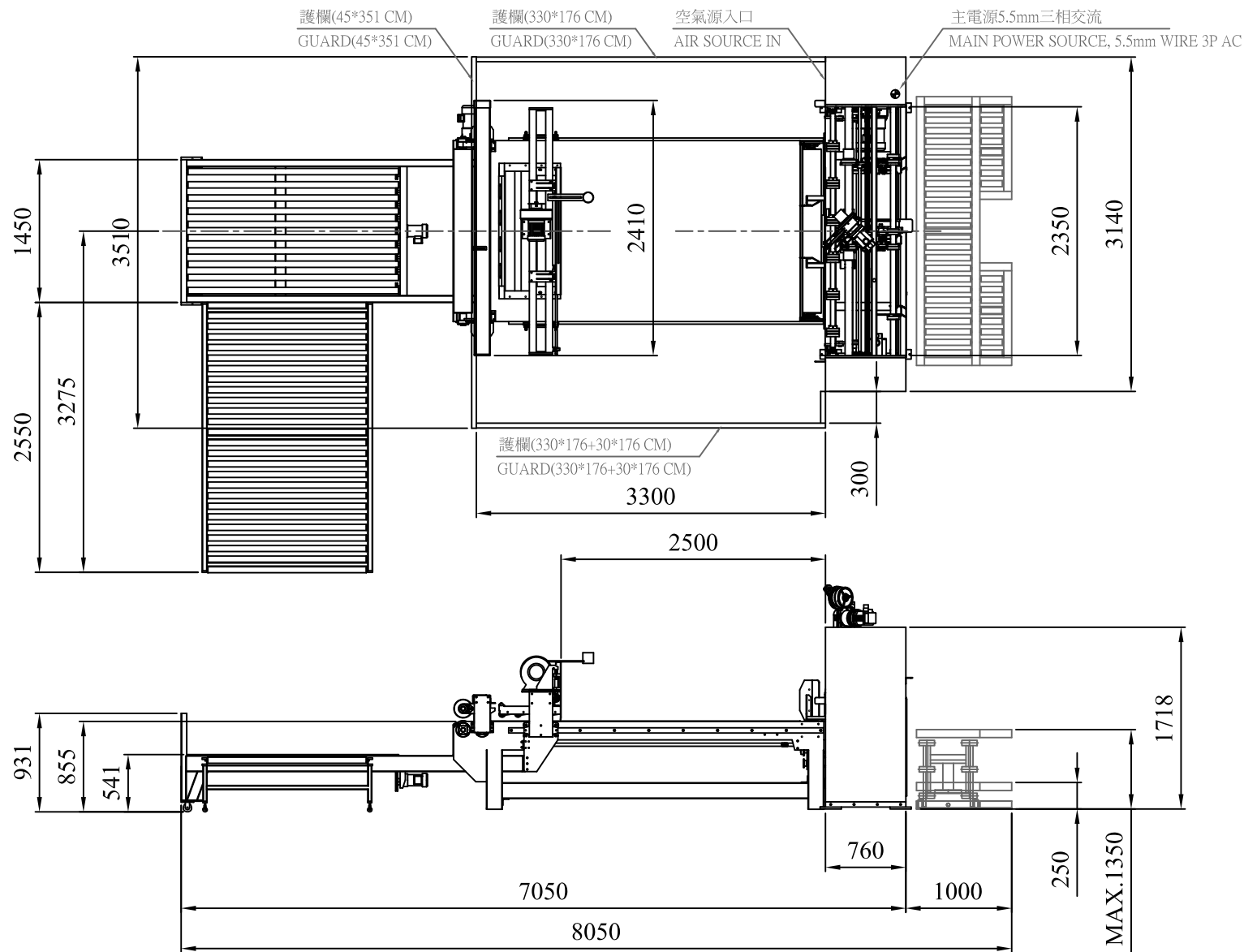
GSS-600 / GSS-600(L)		
單釘 Single Stitching	雙釘 Double Stitching	加強釘 Tie Stitching
/	/	/
/	/	/
/	/	/
/	/	/



## General Specifications 一般規範

MODEL		GSS-600	GSS-600L
打釘速度	STITCHING SPEED	MAX. 600 nails/min	MAX. 600 nails/min
釘數設定範圍	NO. OF NAILS STICHE RANGE	2-99 NAILS	2-99 NAILS
釘距最小	MIN. PITCH OF NAIL	8 mm	8 mm
積紙高度	STACK HEIGHT	850	850
紙張最大尺寸	MAX. PRODUCTS SIZE	3300mmW x 1500mmL	4500mmW x 2500mmL
馬力	POWER REQUIRED	12.5 HP	12.5 HP
機械重量	M/C WEIGHT	4000kgs	4500kgs

※專利機種，仿冒必究※



日期 DATE	簽名 SIGN	圖 稱	GSS-600L 高速半自動釘貼機
製圖 DRAW	06-20 2008	Jess	DRAWING NAME HIGH SPEED SEMI-AUTO STITCHER-GIUR
設計 DESIGN			
校核 CHECK			
第三角法 Thrd angle projection		裕恒機械股份有限公司 GODSWILL PAPER MACHINERY CO., LTD.	
單位 UNIT	mm	比例 SCALE	1 : 30
		圖 號 ASSEM NO.	GSS-600L-I.D.-002



# Semi-Auto

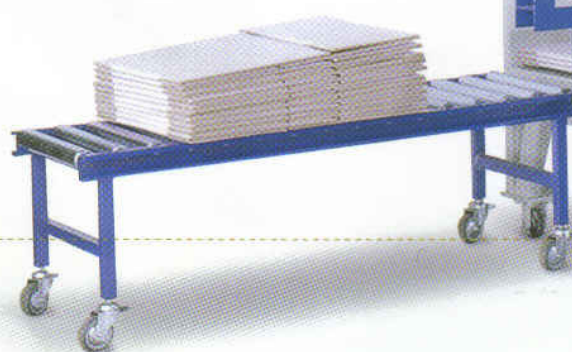
半自動釘貼機

GSS-600(L)

# Gluer & Stitcher

## Special Features 特點

- Max stitching speed is 600 stitches/min and drive by serve motors.
- Special design feeding belt, easy to change.
- Movable stitching head, large apply range for diverse box.
- Motorized stitching head and feeding belts quick to change order.
- 伺服馬達驅動釘速每分鐘600釘。
- 特殊設計皮帶架便於皮帶更換。
- 可移動式釘糊頭可適應各型尺寸紙箱。
- 釘頭及皮帶位置電動調整換單作業迅速。



Counter ejector with spanker and blower for glue.

計數出紙部設有拍板整紙及風機供膠合使用。



Air-seal glue tank prevents glue losing, heating device for winter or Frigid Zone.

氣密式膠桶不浪費可附保溫裝置。



Effi  
tran  
高効





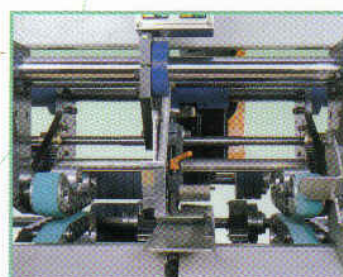
Inventive stopper **square box** and smooth **uninterrupted** boxes flow for high quality and volume production.

創新專利擋板兼顧紙箱校正及連續進紙符合高品質大產能要求。



Monitor control panel is user friendly.

觸控式螢幕人機介面操控簡易。



Invented design of glue head is easy to load and unload, won't leak and don't need to clean. Patented stitching head is non-swinging, simple and durable.

創新膠頭拆裝簡易不漏膠免清洗。專利非擺動式高速釘頭簡單耐用。



Programmable logic controller and electric cabinet.

PLC可程式控制系統。

Automatic elevating lift by hydraulic system.

進紙部自動油壓升降台。

ent, low noise and durable power system.

低噪音且耐用的傳動系。