

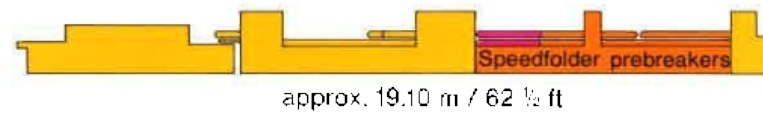
domino 145 domino 145-Matic domino 165-Matic

Four versions:

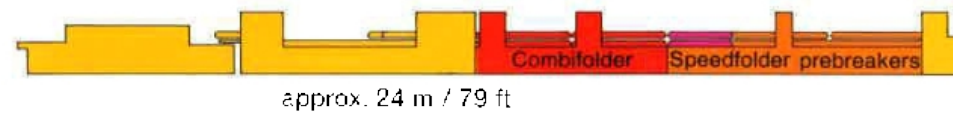
A1: Version for standard folding boxes



A2: Version for standard and crash-lock bottom boxes



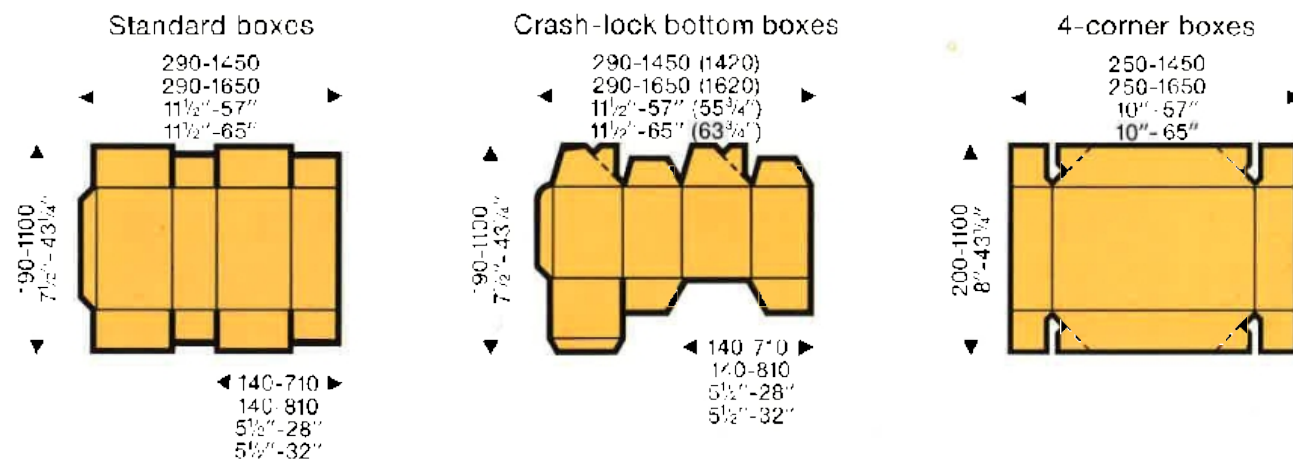
A3: Version for standard, crash-lock bottom and 4-corner boxes



A4: Version for 4-corner and other boxes



Blank sizes: for models 145/165 (and versions A4), in mm and inches.



General data

Convertible stock	Solid board, up to	~200 g/m ²	.048"
	Corrugated, E, B and C-flute		
	Thickness of folded box, max.	20 mm	3/4 in.
Sectional data	Prebreakers, length	6 m	19 3/4 ft
	Combifolder, length	4.40 m	14 1/2 ft
	Folders, length	4.50 m	14 3/4 ft
	Delivery, length of pressing belts	2.90 m	9 1/2 ft
	width of pressing belts	1 m	3 1/4 ft
	height of box stream, max.	200 mm	8 in.
Drive system	Main motor	21 kW	(28 HP)
	Inching speed	8 m/min	26 ft/min
	Operating speed, adjustable from	20-300 m/min	65-1000 ft/min
	Connected load, approx.	75 kVA	

BOBST

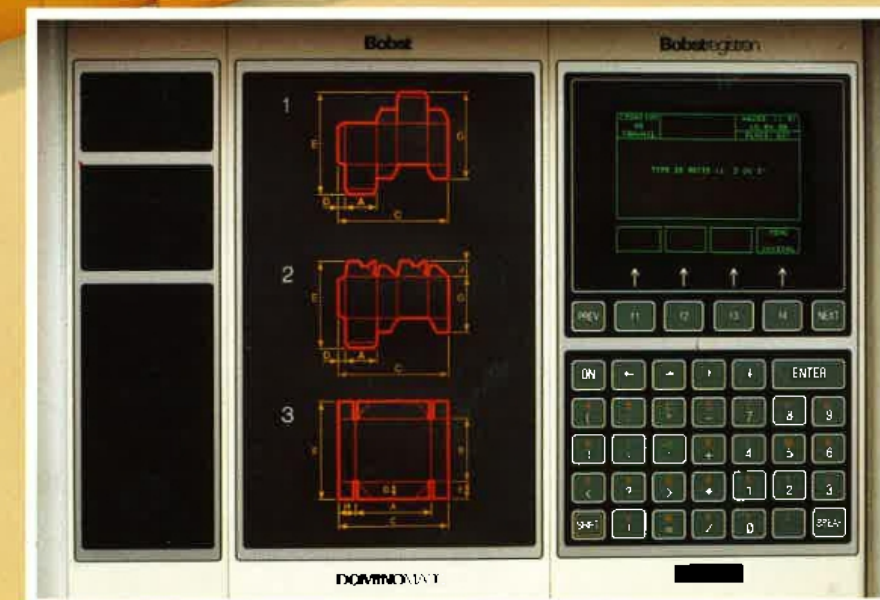
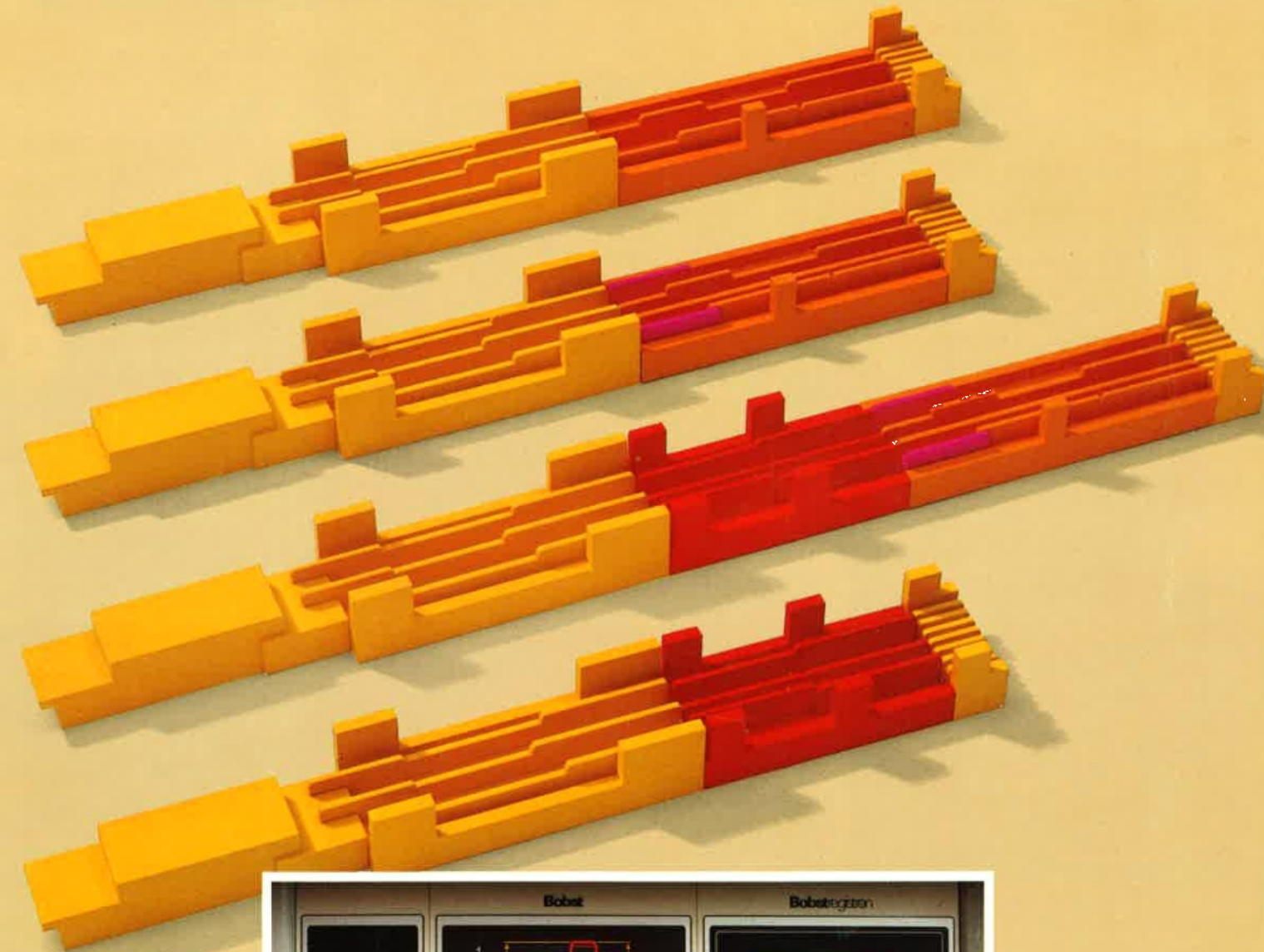
BOBST SA CH-1001 Lausanne, Switzerland
Tel. (021) 25 01 01 Telex 454 821 bob ch Fax (021) 24 11 70
BOBST GROUP INC. Harrison Avenue, Roseland, N.J. 07068, USA
Tel. (201) 226-2800 Telex 139 201 Fax (201) 22-68-625

Printed in Switzerland No 8703-2 Subject to modifications Copyright Bobst SA 1988

Folder-gluer



domino 145 domino 145-Matic domino 165-Matic



Twelve outstanding assets of the Domino 145 and 165:

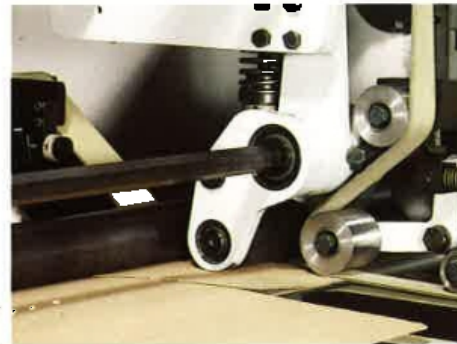
Modular conception

offering four versions perfectly adapted to the various jobs, i.e. standard folding boxes, crash-lock bottom boxes, lidded or non-lidded 4-corner boxes.

Pressing and calibrating devices

Combined design for solid and corrugated board, with individually adjustable pressing rollers and calliper cylinder.

Pressing rollers for solid board and calliper cylinder for corrugated.



Blank conveyance

achieved by laterally guided, broad belts for reliable folding.

Upper conveyors

with adjustable inlet roller and quick tilt-up system.

Long progressive folding action

meeting with structural requirements of large-size corrugated blanks.

Speed variators

controlling left and right-hand folding belts, and adjustable through controls within easy reach along the machine.

Gluing system

operating with mechanical or extrusion process, ensuring easy use, quick set-up and versatility.

Control unit for synchronization of rotary hooks.



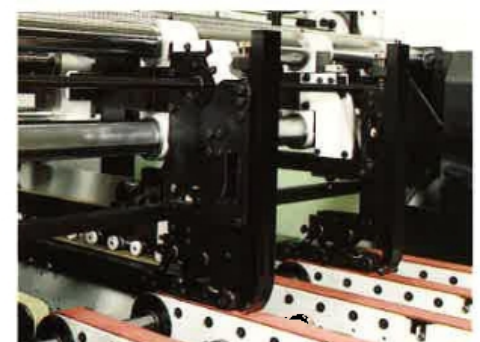
New rear flap folding system with rotary hooks and corresponding belts.

Combifolder module

Innovative design with computer-controlled rotary hooks dispensing with traditional mechanisms for timed blank infeed and conveyance.

Feeder

including expandable air shafts for quick and simultaneous locking of side guides, callipers and infeed conveyors.



Motorized positioning of side guides, callipers and infeed conveyors of the feeder.



Simultaneous locking of all sever infeed conveyors with expandable air shafts.

Delivery

with extra-long air-pressure controlled conveyor belts ensuring reliable gluing.

Transfer section

Newly designed system with less setting operations, though without reducing general versatility.

The length of the conveyor belts of the trombone section is motor-controlled.



The Domino 145 Matic version A4 has been engineered for quick set-up for 4-corner boxes; if necessary, though, certain standard and crash-lock bottom boxes can also be processed.

BOBST