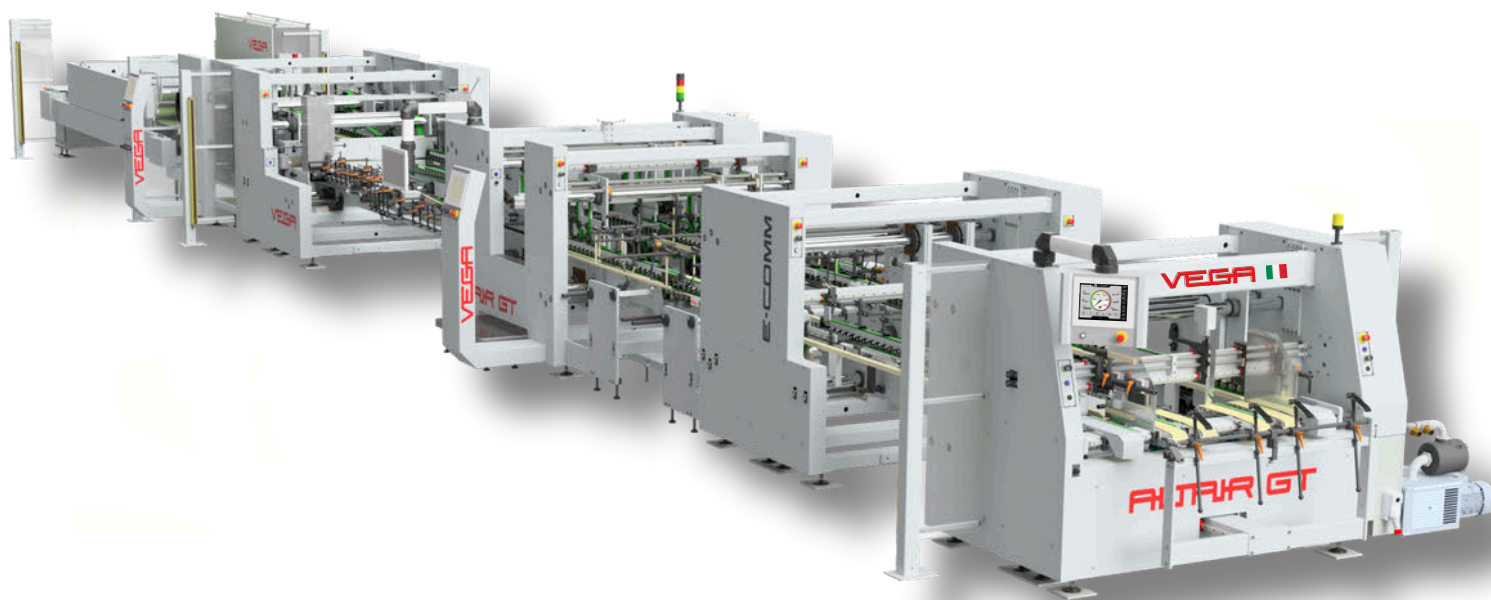
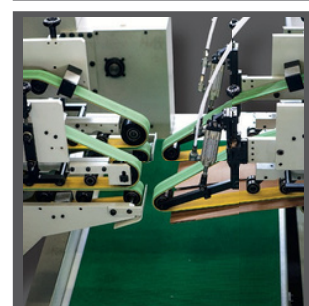
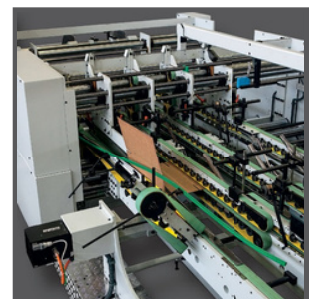
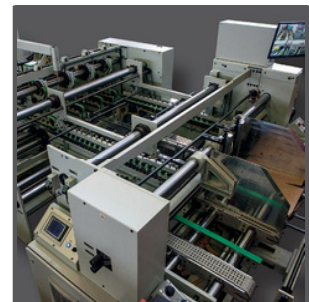
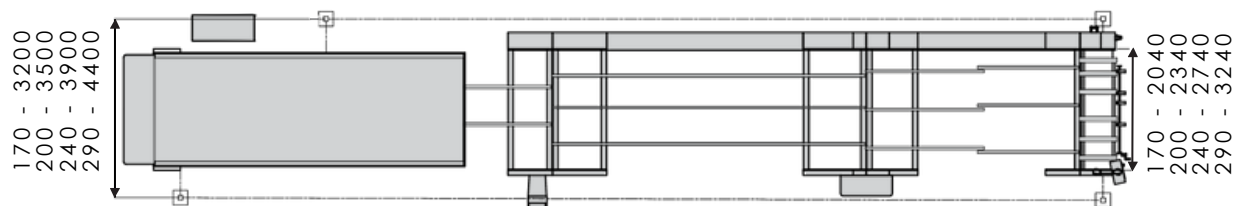



# VEGA

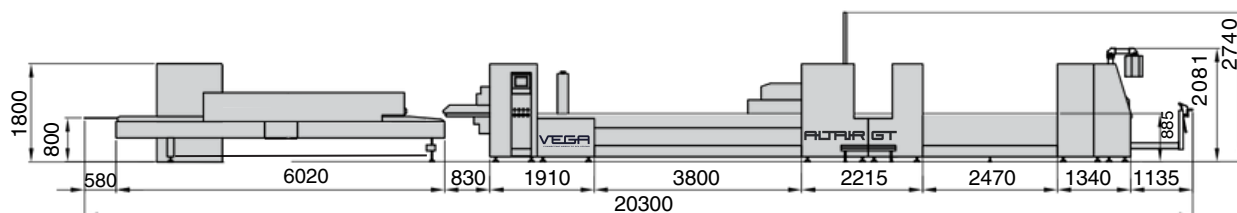
A L T A I R G T 170 • 200 • 240 • 290

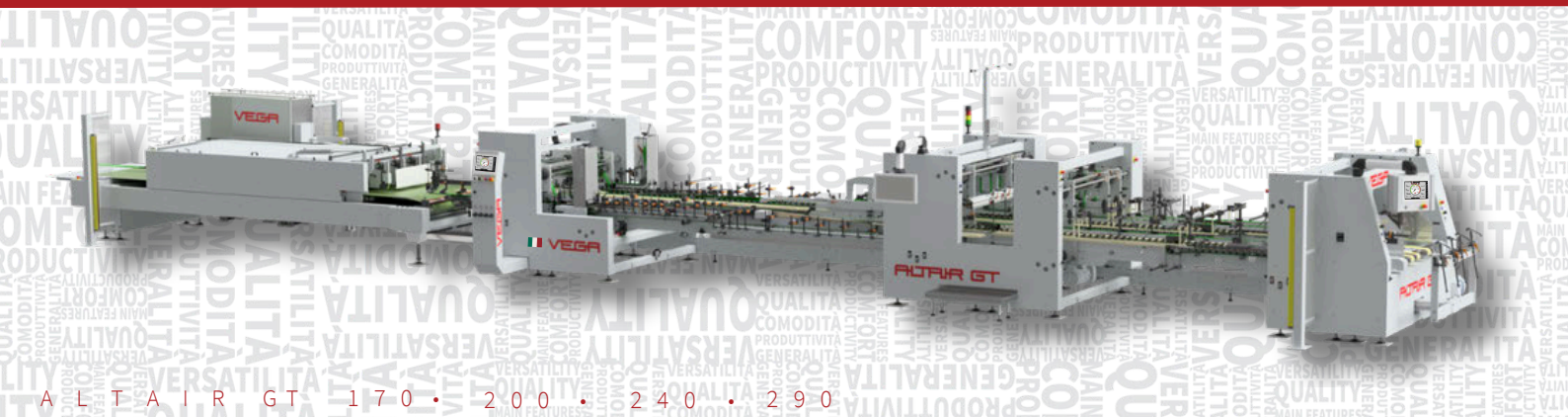


PIEGATRICE-INCOLLATRICE PER SCATOLE IN CARTONE TESO E ONDULATO  
FOLDING AND GLUING MACHINE FOR SOLID AND CORRUGATED BOARD BOXES

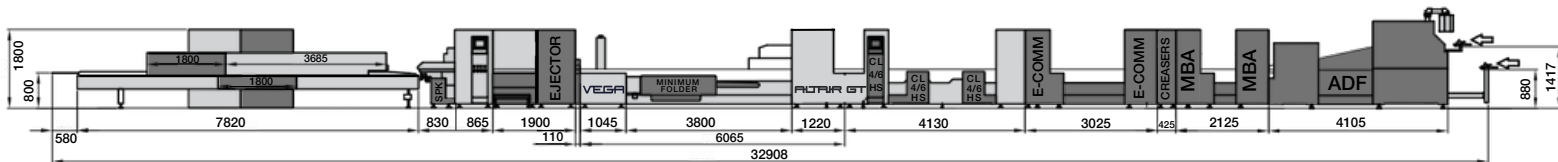


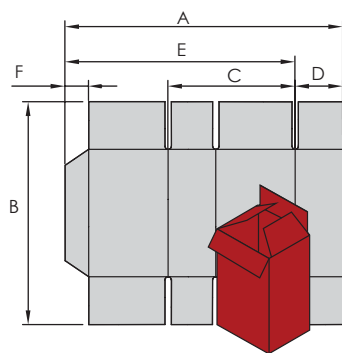
| Caratteristiche tecniche / Technical Data                             |         | ALTAIR GT 170   | ALTAIR GT 200 | ALTAIR GT 240 | ALTAIR GT 290 |
|---|---------|---|---------------|---------------|---------------|
| Fustellato aperto / Open blank  | max mm  | 1720  | 2020          | 2420          | 2920          |
|   | min mm  | 435   | 435           | 435           | 435           |
|   | min* mm | 255   | 255           | 255           | 255           |
| Fustellato chiuso / Folded blank                                      | max mm  | 850   | 1000          | 1200          | 1450          |
|   | min mm  | 210   | 210           | 210           | 210           |
|   | min* mm | 120   | 120           | 120           | 120           |
| Altezza / Blank length  | max mm  | 1400  | 1400          | 1400          | 1400          |
|   | min mm  | 100   | 100           | 100           | 100           |
| Materiale lavorato / Convertible material                             |         |  g/m <sup>2</sup> 500 ÷ 1500<br>N-F-E-B-C-A-K-EB-BC-BA |               |               |               |
| Spessore scatola piegata / Thickness folded box                       |         | max 35 mm   |               |               |               |
| Velocità / Speed  | m/min   | 20 ÷ 250  |               |               |               |
| Motore a velocità variabile / Variable speed motor                    | kW      | max 7.5   |               |               |               |
| Aria compressa / Compressed air                                       | bar     | 6   |               |               |               |
| Peso netto / Net weight   | kN      | 190   | 200           | 209           | 215           |
| *Con dispositivo astucci piccoli / *With minimum folding boxes device |         |   |               |               |               |



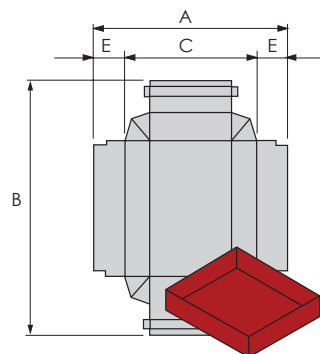


ALTAIR GT 170 • 200 • 240 • 290

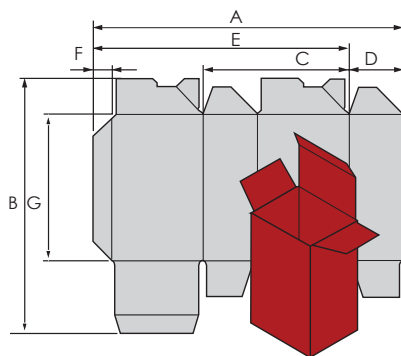




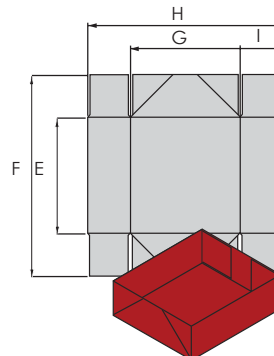
|    |        | VEGA 170 | VEGA 200 | VEGA 240 | VEGA 290 |
|----|--------|----------|----------|----------|----------|
|    | min mm | MAX mm   | MAX mm   | MAX mm   | MAX mm   |
| A  | 435    | 1720     | 2020     | 2420     | 2920     |
| B  | 100    | 1400     | 1400     | 1400     | 1400     |
| C  | 210    | 850      | 1000     | 1200     | 1450     |
| D  | 40     | 425      | 500      | 600      | 725      |
| E  | -      | 1620     | 1920     | 2320     | 2820     |
| F  | 15     | 60       | 60       | 60       | 60       |
| A* | 255    | -        | -        | -        | -        |
| C* | 120    | -        | -        | -        | -        |



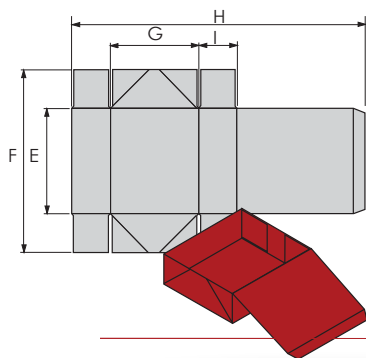
|   |        | VEGA 170 | VEGA 200 | VEGA 240 | VEGA 290 |
|---|--------|----------|----------|----------|----------|
|   | min mm | MAX mm   | MAX mm   | MAX mm   | MAX mm   |
| A | 360    | 1700     | 2000     | 2400     | 2400     |
| B | 100    | 1400     | 1400     | 1400     | 1400     |
| C | 200    | 1400     | 1700     | 1800     | 1800     |
| E | 40     | 250      | 250      | 300      | 300      |



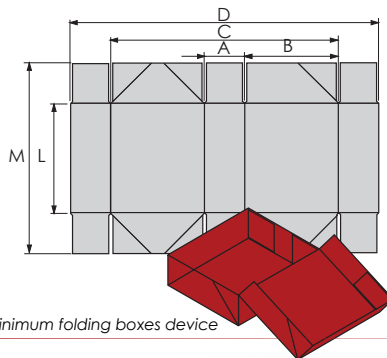
|    |        | VEGA 170 | VEGA 200 | VEGA 240 | VEGA 290 |
|----|--------|----------|----------|----------|----------|
|    | min mm | MAX mm   | MAX mm   | MAX mm   | MAX mm   |
| A  | 435    | 1720     | 2020     | 2420     | 2920     |
| B  | -      | 1400     | 1400     | 1400     | 1400     |
| C  | 210    | 850      | 1000     | 1200     | 1450     |
| D  | 40     | 425      | 500      | 600      | 725      |
| E  | -      | 1620     | 1920     | 2320     | 2820     |
| F  | 15     | 60       | 60       | 60       | 60       |
| G  | 100    | -        | -        | -        | -        |
| A* | 315    | -        | -        | -        | -        |
| C* | 150    | -        | -        | -        | -        |



|    |        | VEGA 170 | VEGA 200 | VEGA 240 | VEGA 290 |
|----|--------|----------|----------|----------|----------|
|    | min mm | MAX mm   | MAX mm   | MAX mm   | MAX mm   |
| E  | 100    | 1320     | 1330     | 1330     | 1330     |
| F  | 180    | 1400     | 1400     | 1400     | 1400     |
| G  | 200    | 1300     | 1600     | 1800     | 1800     |
| H  | 280    | 1600     | 1800     | 2000     | 2200     |
| I  | 40     | 250      | 250      | 250      | 250      |
| G* | 180    | -        | -        | -        | -        |
| H* | 260    | -        | -        | -        | -        |



|   |        | VEGA 170 | VEGA 200 | VEGA 240 | VEGA 290 |
|---|--------|----------|----------|----------|----------|
|   | min mm | MAX mm   | MAX mm   | MAX mm   | MAX mm   |
| E | 100    | 1320     | 1320     | 1320     | 1320     |
| F | 180    | 1400     | 1400     | 1400     | 1400     |
| G | 200    | 650      | 800      | 1000     | 1200     |
| H | 500    | 1650     | 1950     | 2350     | 2800     |
| I | 40     | 200      | 200      | 200      | 200      |

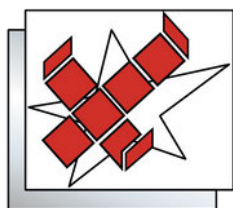


|   |        | VEGA 170 | VEGA 200 | VEGA 240 | VEGA 290 |
|---|--------|----------|----------|----------|----------|
|   | min mm | MAX mm   | MAX mm   | MAX mm   | MAX mm   |
| A | 40     | 200      | 200      | 200      | 200      |
| B | 200    | -        | -        | -        | -        |
| C | 440    | 1400     | 1700     | 2100     | 2600     |
| D | 520    | 1700     | 2000     | 2400     | 2900     |
| L | 100    | 700      | 700      | 700      | 700      |
| M | 180    | 1000     | 1000     | 1000     | 1000     |

\*Con dispositivo astucci piccoli \* With minimum folding boxes device

Quattro formati, un'unica filosofia e tecnica di base, che consentono la produzione di imballaggi in cartone ondulato di grandi formati. Le dimensioni imponenti delle macchine non vanno a discapito della loro semplicità e duttilità. Utilizzabili anche per formati ridotti o lavorazioni particolari, hanno quel qualcosa in più che ne fanno un prodotto "unico" nel suo genere. Le macchine, nella versione base, dispongono di motorizzazioni per il posizionamento di tutti gli assi. Altair GT è personalizzabile con ampia gamma di moduli extra.

Four sizes, a unique philosophy and basic technique which permit the production of corrugated board packagings of big sizes. The stately dimensions of the machines are not disadvantage of their simplicity and versatility. They can be employed also for the production of small sizes boxes or specific manufactures and they have something more that makes them a unique product of their kind. The machines in the standard version, are equipped with motorization for the positioning of all their axes. Altair GT is fully customizable with many extra modules.



**VEGA**  
CONNECTING NEEDS TO SOLUTIONS

MACCHINE PER CARTOTECNICA  
SOLID AND CORRUGATED BOARD MACHINES



VEGA S.R.L.

VIALE DELL'INDUSTRIA, 6 ▪ 20037 PADERNO DUGNANO ▪ MILANO ▪ ITALY  
TEL. +39 02 99046212 ▪ FAX +39 02 99046202  
COMM@VEGAGROUP.IT ▪ WWW.VEGAGROUP.IT