

General Details

- Quick release and slide carriers mounted on linear bearings and chrome plated shafts
- No requirements for lead screws or carrier drives etc.
- Remote inch button for easy setting.
- Upper carriers with quick release pressure handles.
- All belts easily replaceable, mainly without withdrawing shafts.
- Operator control buttons down full length of each side of gluer.
- Full length Safety Beam guards and local in-running nip guards.
- 3 wide lower carriers and 2 upper carriers in each section.
- Optional lower left hand gluepot and auto fill system.
- All parts for all styles mounted on machine — no need for shadow boards.

The resulting machine is a very compact and versatile multipoint gluer with everything on board and in board with an extremely quick installation, at an affordable price.

Technical Details

- Overall length: 12.5 metres + 1 metre feed extension
- Overall width: 2 metres
- Maximum speed: 120 metres/min
- Box dimensions: Please see separate chart
- Materials: Cartonboard, Solidboard, Microflute, E, B, C and Double Wall
- Power requirement: 40 Amp, 29KVA, 3 Phase, 50Hz

Details and specifications are liable to change without notice.



Andrew & Suter Ltd.

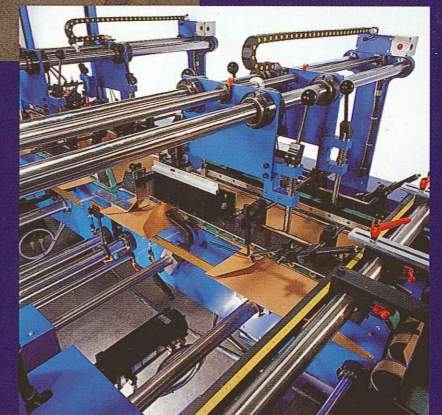
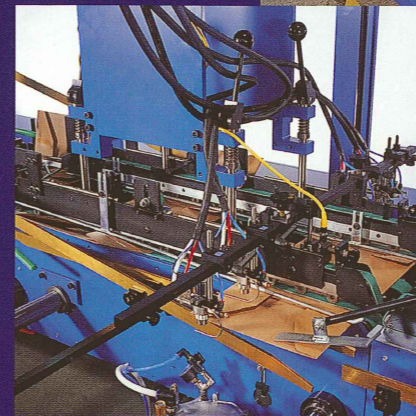
Alban Park, Hatfield Road,
St Albans, Herts. AL4 0AS, England.

Telephone: +44 (0) 1727 866233
Facsimile: +44 (0) 1727 862847

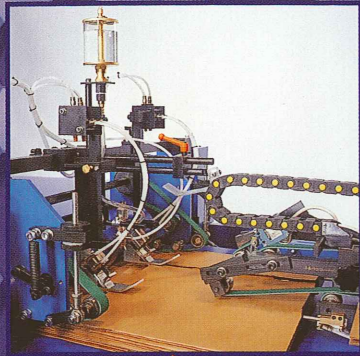
E-mail: sales@andrewsuter.co.uk
www.andrewsuter.co.uk

AGENT

FULLY-AUTOMATIC SUPERNOVA MULTI-POINT GLUER



Andrew & Suter Ltd.

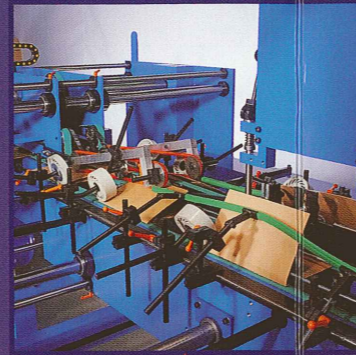


TROMBONE-DELIVERY SECTION

- Pneumatically controlled compression section
- Fully adjustable upper and lower trombones
- Compression stacker flow control system
- Pneumatic front and back squaring unit
- Two in-feed compression gripper units
- Spray counter unit and batch counter
- Jam trip switch

FINAL FOLD SECTION

- Brass and nylon folder rails
- Rubber folder and pressure rolls
- Timing belt driven final fold belts
- Quick release adjustment handles



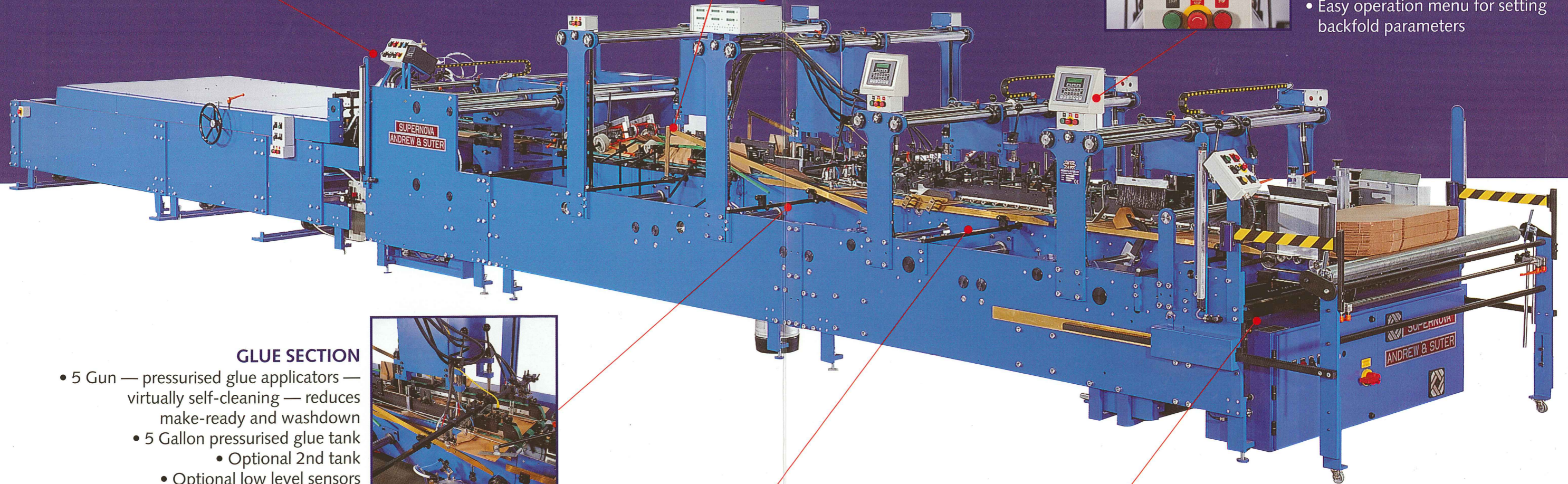
GLUE CONTROL UNIT

- 3 channels 5 guns — pressurised glue system
- Fully integrated system — simple to operate
- Production speed indicator
- Batch count



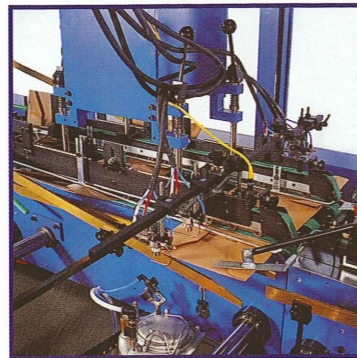
BACKFOLD CONTROL STATION

- Control station for each backfold unit
- Easy operation menu for setting backfold parameters



GLUE SECTION

- 5 Gun — pressurised glue applicators — virtually self-cleaning — reduces make-ready and washdown
- 5 Gallon pressurised glue tank
 - Optional 2nd tank
 - Optional low level sensors and low level warning lights



TWO BACKFOLD SECTIONS

- Electronic backfold units with direct drive motor mounted in board of frames
 - Adjustable vacuum chamber for first or second backfold section
 - 4 backfold fingers with optional styles for different materials
 - Optional spring loaded side hold down fingers for solid board
 - Various hold down devices for precise folding



FEED SECTION

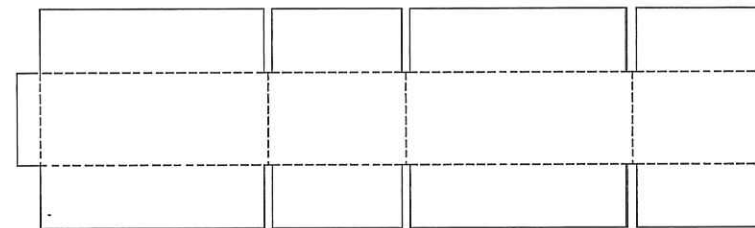
- Machine mounted electrical control cabinet
- Fully adjustable feed for length and width
- Rear adjustable feed support roller
- Individually adjustable feed belts
- Untimed stream feed system

SUPERNOVA STYLE RANGE

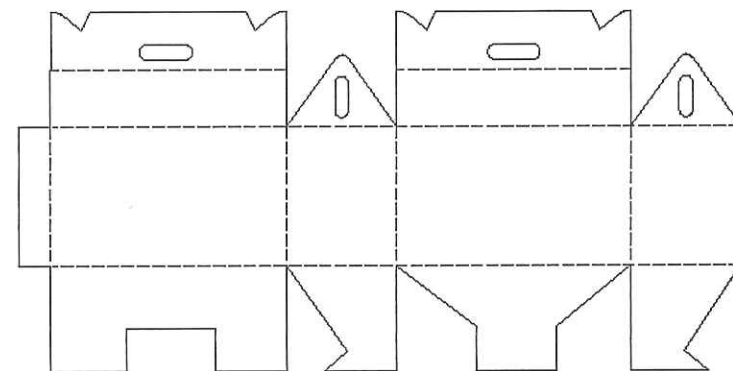
Straight Line



0200



0201



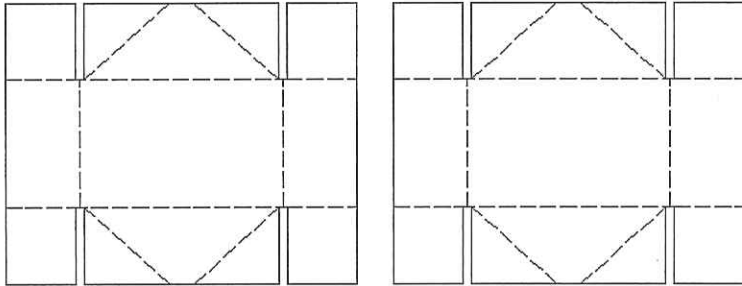
0217

**ANDREW & SUTER LTD
ALBAN PARK
HATFIELD ROAD
ST ALBANS
AL4 0JJ**

**Tel No: + 44 (0) 1727 866233
Fax No: + 44 (0) 1727 862847**

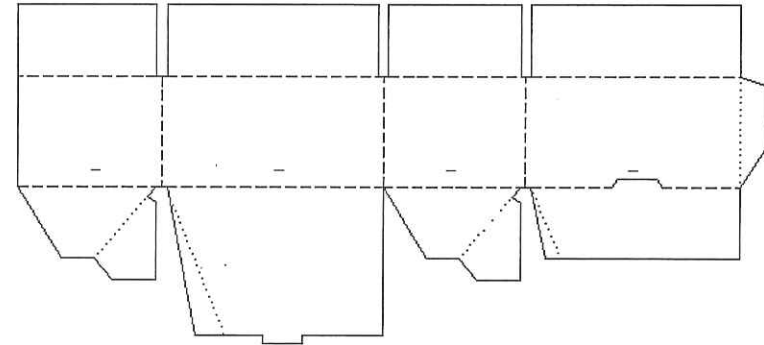
**www.andrewsuter.co.uk
E-mail - sales@andrewsuter.co.uk**

Four corner infold trays (4 point glued)



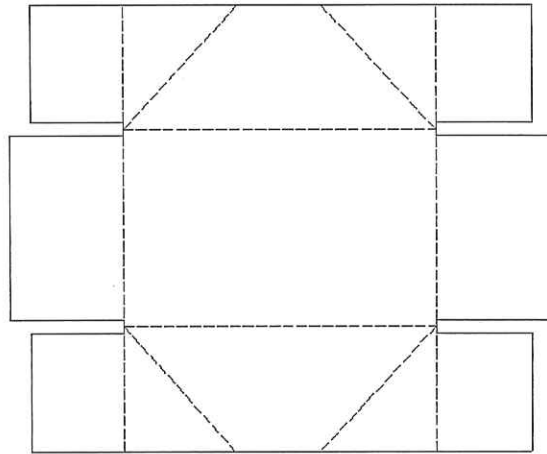
0304

Crashlock (3 point glued)

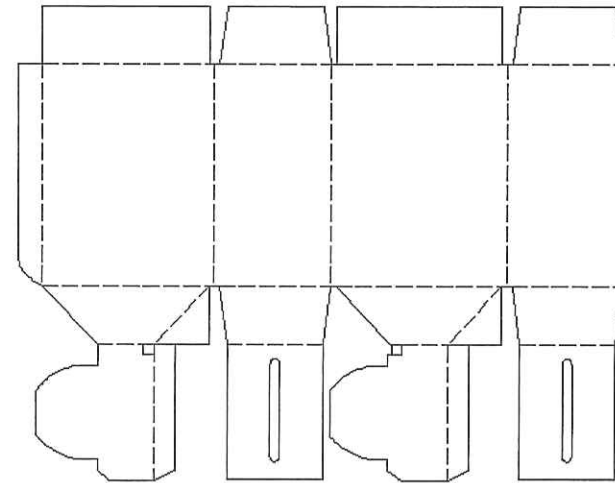


0701

Four corner outfold trays (4 point glued)

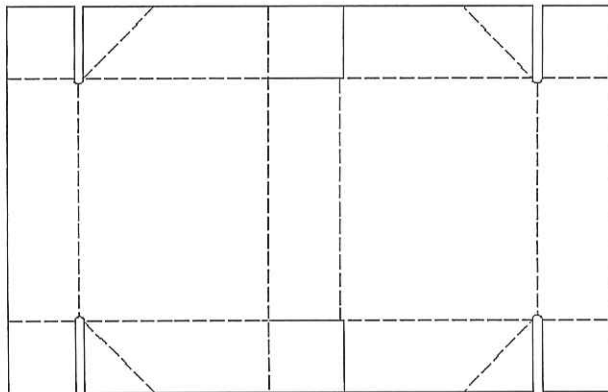


0450



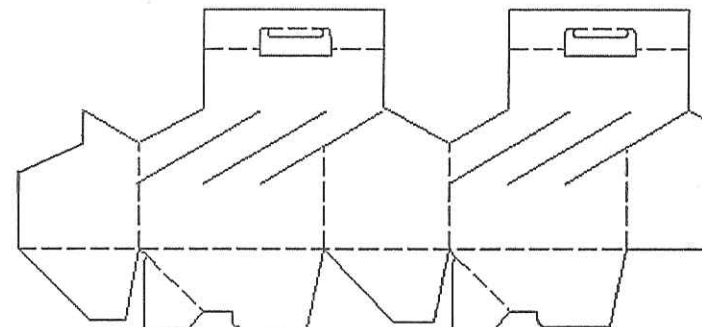
0715

Four corner , combined base and lid



0759

Crashlock (wine bottle carrier)



0717