



ADVANCE FACER

PERFORMANCE

BHS CORRUGATED



AF

PERFORMANCE

*The right machine for any production requirement.
Proven technology, short installation time and
low lifetime costs. That is what we understand as
VALUE FOR MONEY!*



>>>

Because we love what we do.



ADVANCE FACER - PERFORMANCE

WITH A STRAIGHT FORWARD MACHINE DESIGN CONCEPT AND THE LATEST CASSETTE CONCEPT OF THE BHS ADVANCE FACER ALL REQUIREMENTS ON QUALITY AND PERFORMANCE ARE MET. TODAY AND IN THE FUTURE.

- > HIGH RATE OF RETURN WITH LOW INVESTMENT COSTS
- > HEAVY DUTY DESIGN FOR LONG LIFE
- > TRIED AND TESTED ROLL GEOMETRY AND CONFIGURATION
- > SOFT TOUCH CONTROL OF THE GLUE APPLICATOR ROLL
- > GAP CONTROL FOR CONSTANT GLUE APPLICATION
- > FAST CASSETTE CHANGE

AF – PERFORMANCE

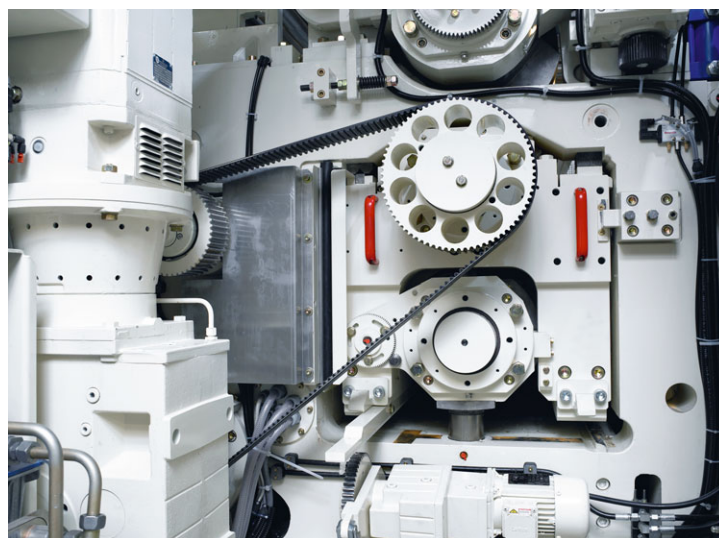
-- FIG. 1 --

Low-vibration frame for consistent production results

BHS have developed a single facer for the special requirements of markets in Europe and America with the new Advance Facer Performance AF-P. Based on the proven and successful concept of the Modul Facer, the AF-P is produced according to the highest quality principles.

With more than 40 years of experience, BHS have produced a machine that distinguishes itself in particular through an optimal price-performance ratio. Therefore it is capable of meeting all current and future requirements of customers.

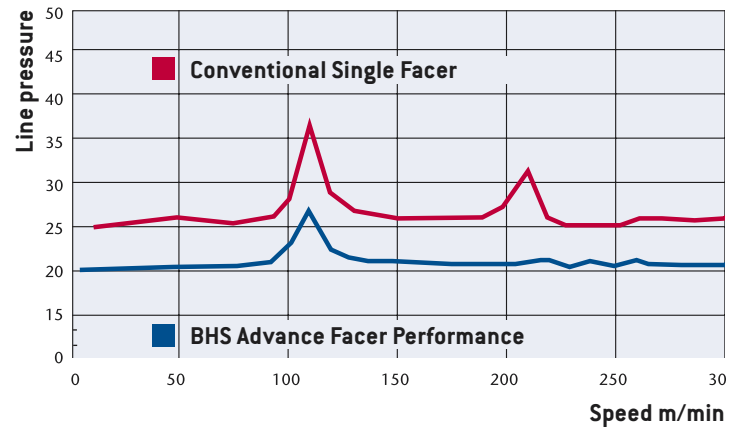
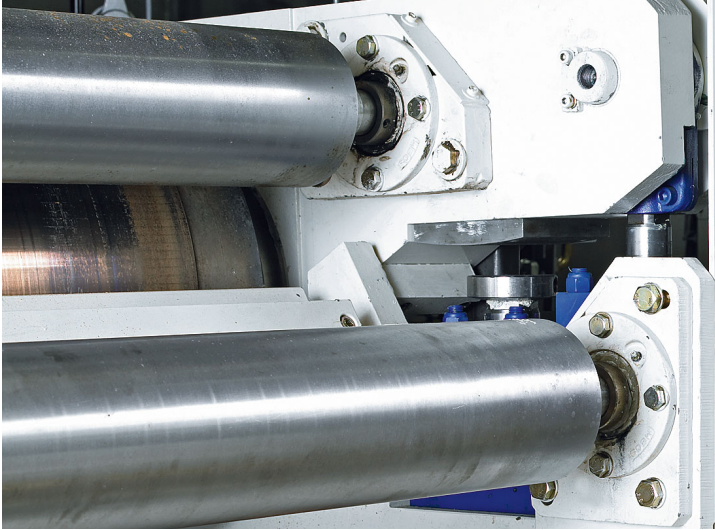
All parts are available regionally so that spare part supply is guaranteed at any time. Support and service likewise takes place through the regional branches. All BHS employees are trained in an extensive training program at our parent plant in Germany.



MINIMAL VIBRATIONS – SOLID QUALITY

Solid structural design principles ensure high machine availability and long life. The massive, low-vibration machine frame of high-quality cast iron provides an extremely low-vibration rate even in high speed ranges.

PATENTED BHS TECHNOLOGY: THE BEST IDEAS FOR OPTIMUM BONDING



-- FIG. 2 --

Automatic contact pressure with BHS Line Pressure Control

-- FIG. 3 --

Static and dynamic line pressure

BHS LINE PRESSURE CONTROL LPC FORCE REGULATED HYDRAULIC SYSTEM

The AF-P is equipped with the new BHS patented LINE PRESSURE CONTROL® System for control of the pressure roll. This development guarantees that the self-regulation of the pre-set line pressure of the pressure roll is assured throughout the entire operation and can be responsive to every change in paper thickness.

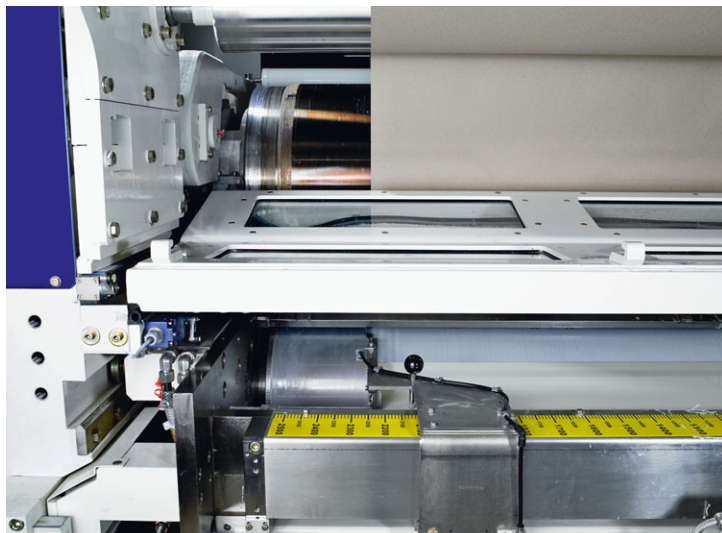
The load of the pressure roll takes place through a force-regulated hydraulic system. During operation a constant pressure is maintained and faultless adhesion is ensured, even at splice allowing splice joints to run through with speeds of up to 300 m/min.

In comparison to other single facers with pressure roll, the AF-P offers better resonance behaviour on the basis of the LPC® system.

ADVANTAGES OF THE BHS LPC® SYSTEM:

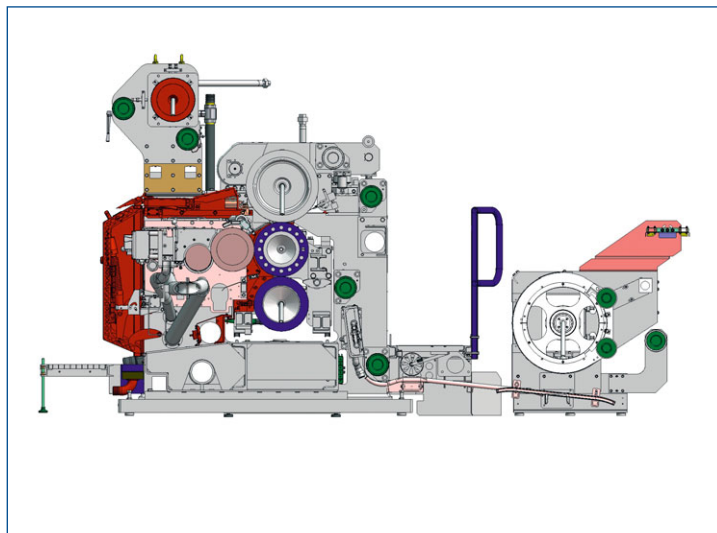
- > *Production of high-quality corrugated board at all speeds*
- > *Constant board values, even with reduced paper weights*
- > *Simple operation and low maintenance expenditure*

GLUE APPLICATION WITH POSITIVE PRESSURE AND SOFT TOUCH: PRECISION IN ALL CONDITIONS



-- FIG. 4 --

Glue dams with motor adjustment



-- FIG. 5 --

High pressure system (schematic diagram)

BHS SOFTTOUCH® SYSTEM

A precise and even glue application over the entire working width of the machine – at any speed. This is an essential condition for the production of high quality board. The AF-P uses the BHS SOFTTOUCH® SYSTEM. The applicator roll is positioned absolutely parallel to the upper corrugating roll, which leads to good adhesion values, improved board quality and a minimum of waste.

This new system is much more flexible and reliable than conventional systems with gap control and provides constant adhesion over the entire working width with all paper qualities.

The glue dams are positioned to the new position with a change in paper width. Each time the glue dams move, the applicator roll is cleaned of residual glue by an automatic cleaning system. Thus the life of the roll is increased and production reliability is improved.

GLUE UNIT PRESSURE CHAMBER

The newly developed glue unit represents an essential feature with the AF-P. The line contact between glue applicator roll and corrugating roll is constantly maintained under all production conditions.

THE ADVANTAGES OF THE NEW GLUE UNIT:

- > *Reduced production problems due to clean corrugating rolls*
- > *Higher production speeds are possible with consistent glue application*
- > *High flexibility with the production of all flutes*

THE AF-P ROLL PROFILE: CORRUGATING ROLLS FORM THEIR SUCCESS



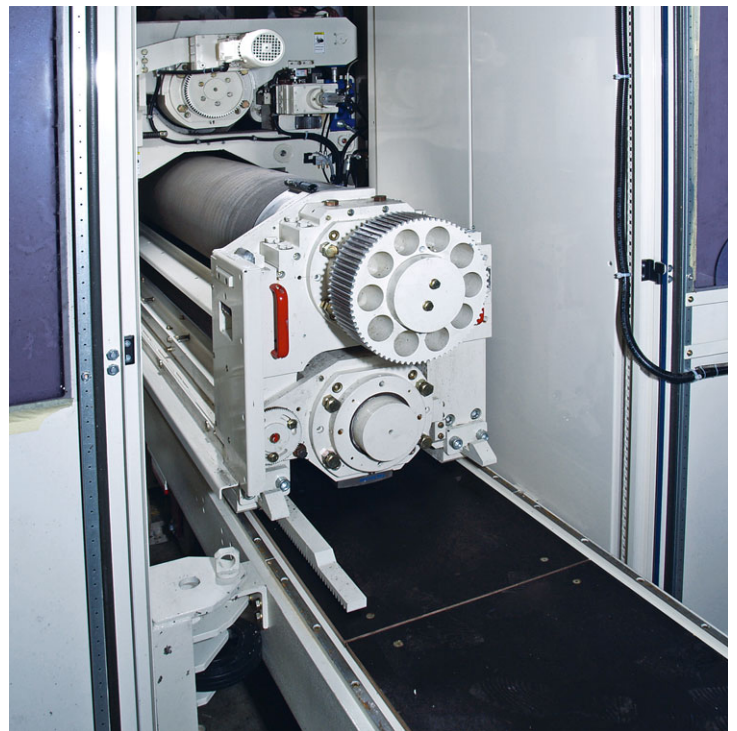
-- FIG. 6 --

BHS Cassette Magazine® on drive side

CASSETTE CHANGE MAGAZINE® ON DRIVE SIDE

Two systems are available for corrugating roll change with the AF-P. The BHS Cassette Magazine® is available as an option on the one hand. It is located on the drive side of the machine and can accept up to three cassettes. Cassette change can take place in less than 10 minutes. Optionally, the rolls can be preheated before changeover to operating temperature. A faster and problem-free production start is thus guaranteed. The BHS Cassette Magazine® was developed for customers with frequent flute changes and for those that are looking for a space-saving solution in order to minimise the movement of cassettes in the production area.

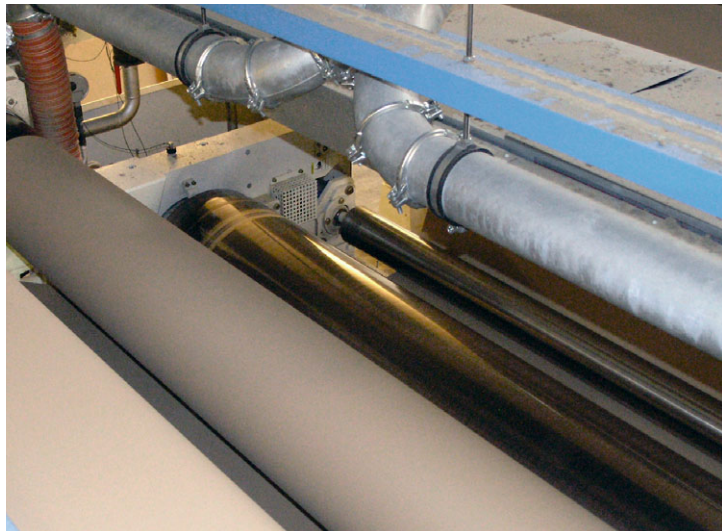
Alternatively, the roll can be transported by a manually-operated or motor-operated cart to the machine. There, the cassette is transferred to the entrance point at either the drive side or operator side of the machine and electrically moved into production position.



-- FIG. 7 --

Steam connection with quick coupling for problem-free flute change.

INSTALLATION AND OPERATION: PRACTICAL AND USER FRIENDLY



-- FIG. 8 --

Optimal preheating of liner papers with integrated preheater with 300 mm drum diameter



-- FIG. 9 --

Touch Screen and control panel on the machine for ease of machine control

PREHEATING OF THE PAPER

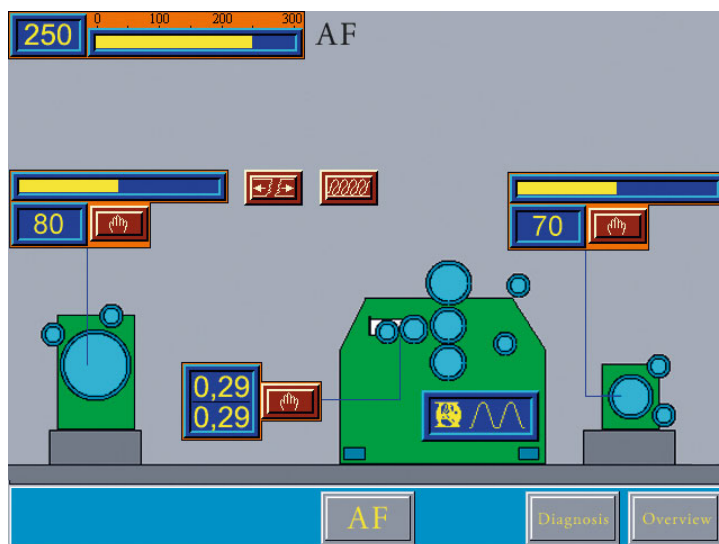
With the basic model of the AF-P, the liner is heated by a preheater with a diameter of 300 mm. An additional preheater with automatic wrap arm control and regulated drive is available as an option.

SIMPLE OPERATION

One of the basic design principles in the development of the AF-P was simple and safe operation. Easy and secure access to all points enables quick intervention in the production process, as needed, and problem-free cleaning of the machine.

The controls are state-of-the-art. The arrangement of the operating elements and the paper path was designed according to ergonomic considerations. Sensors monitor the production and automatically stop the machine in the event of a paper tear.

In addition to the parameters, all operational values are displayed and clearly represented. So errors can be quickly found and remedied.

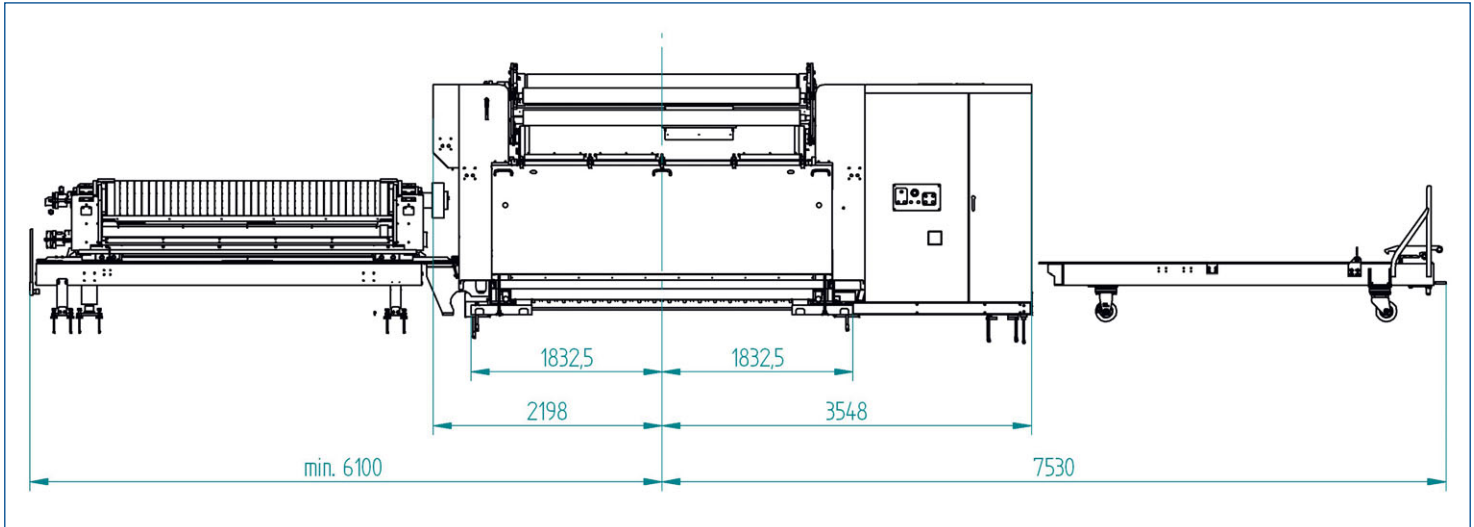


-- FIG. 10 --

Simple, intuitive operation by Touch Screen System

DESIGN AND TECHNOLOGY:

PROVEN DESIGN FOR QUICK INSTALLATION



-- FIG. 11 --

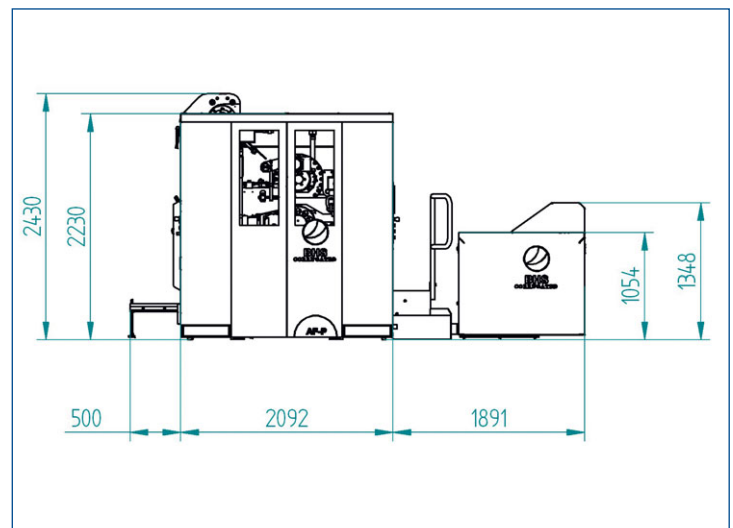
Advance Facer (with preheater and preconditioner) installation measures

MAINTENANCE AND INSTALLATION

The extensive experience that BHS has gathered with the construction of single facers has been applied to the AF-P.

Wear parts and maintenance expenditure were reduced to a minimum; an integrated system for monitoring the service work contribute to minimal maintenance costs for high availability of the AF-P.

On the basis of the compact dimensions, the AF-P can be very easily installed in existing lines. The machine is delivered completely finished for installation, all switch cabinets are already on the machine.



TECHNICAL DATA

Working widths:	2,500 / 2,800 mm
Max. operating steam pressure:	16 bar
Supply voltage:	400 V
Main drive:	75 kW
Total weight:	approx. 26 tons

Subject to technical changes.



BHS CORRUGATED / SERVICES / CORRUGATING ROLLS

Paul-Engel-Strasse 1
92729 Weiherhammer/Germany

/ PHONE .. +49.9605.919-211
/ FAX .. +49.9605.919-301

/ MAIL .. info@bhs-corrugated.de
/ WEB .. www.bhs-corrugated.de